

# Vantage

## По вопросам продаж и поддержки обращайтесь:

Алматы (7273)495-231  
Ангарск (3955)60-70-56  
Архангельск (8182)63-90-72  
Астрахань (8512)99-46-04  
Барнаул (3852)73-04-60  
Белгород (4722)40-23-64  
Благовещенск (4162)22-76-07  
Брянск (4832)59-03-52  
Владивосток (423)249-28-31  
Владикавказ (8672)28-90-48  
Владимир (4922)49-43-18  
Волгоград (844)278-03-48  
Вологда (8172)26-41-59  
Воронеж (473)204-51-73  
Екатеринбург (343)384-55-89  
Иваново (4932)77-34-06  
Ижевск (3412)26-03-58  
Иркутск (395)279-98-46  
Казань (843)206-01-48

Россия +7(495)268-04-70

Калининград (4012)72-03-81  
Калуга (4842)92-23-67  
Кемерово (3842)65-04-62  
Киров (8332)68-02-04  
Коломна (4966)23-41-49  
Кострома (4942)77-07-48  
Краснодар (861)203-40-90  
Красноярск (391)204-63-61  
Курск (4712)77-13-04  
Курган (3522)50-90-47  
Липецк (4742)52-20-81  
Магнитогорск (3519)55-03-13  
Москва (495)268-04-70  
Мурманск (8152)59-64-93  
Набережные Челны (8552)20-53-41  
Нижний Новгород (831)429-08-12  
Новокузнецк (3843)20-46-81  
Ноябрьск (3496)41-32-12  
Новосибирск (383)227-86-73

Киргизия +996(312)-96-26-47

Омск (3812)21-46-40  
Орел (4862)44-53-42  
Оренбург (3532)37-68-04  
Пенза (8412)22-31-16  
Петрозаводск (8142)55-98-37  
Псков (8112)59-10-37  
Пермь (342)205-81-47  
Ростов-на-Дону (863)308-18-15  
Рязань (4912)46-61-64  
Самара (846)206-03-16  
Саранск (8342)22-96-24  
Санкт-Петербург (812)309-46-40  
Саратов (845)249-38-78  
Севастополь (8692)22-31-93  
Симферополь (3652)67-13-56  
Смоленск (4812)29-41-54  
Сочи (862)225-72-31  
Ставрополь (8652)20-65-13  
Сургут (3462)77-98-35

Казахстан +7(7172)727-132

Сыктывкар (8212)25-95-17  
Тамбов (4752)50-40-97  
Тверь (4822)63-31-35  
Тольятти (8482)63-91-07  
Томск (3822)98-41-53  
Тула (4872)33-79-87  
Тюмень (3452)66-21-18  
Ульяновск (8422)24-23-59  
Улан-Удэ (3012)59-97-51  
Уфа (347)229-48-12  
Хабаровск (4212)92-98-04  
Чебоксары (8352)28-53-07  
Челябинск (351)202-03-61  
Череповец (8202)49-02-64  
Чита (3022)38-34-83  
Якутск (4112)23-90-97  
Ярославль (4852)69-52-93

# ***Vantage Fortian***

Advanced Productivity



## **Advanced Productivity with Vantage Fortian 1.5T**

Your work is our inspiration. We listen carefully to your needs and strive to provide innovative and highly effective solutions. Now, more than ever, radiologists and technologists face continually increasing case-loads and the effects of cost pressure on the healthcare system. Our solution is the Vantage Fortian 1.5T MRI – specially developed to answer the emerging needs of MRI specialists. With new workflow solutions focused on saving time, experience advanced MRI productivity that integrates seamlessly into your facility.

## Enhance 1.5T MRI workflow

- Remote monitoring and seamless patient handling with mobile Table UX
- Enable correct patient positioning and coil set-up with Ceiling Camera and Intelligent Monitor
- Efficiently plan with ForeSee View and automate routine sequences with Auto Scan Assist
- Easy to clean gloss coating aids sterilization and disinfection requirements



## Accelerate 1.5T MRI scans and harmonize trade-offs

- Advanced intelligent Clear-IQ Engine (AiCE) helps you to see through the noise to deliver clear, sharp and distinct images
- Compressed SPEEDER for 2D and 3D, Fast 3D and parallel imaging scan technologies reduce scan time
- Consistent and robust imaging with PURERF
- Advanced post processing with Olea/Vitrea



## Immersive patient experience and comfort

- Small footprint and low energy consumption minimizes operational costs
- MR Theater helps relax patients with a virtual immersive experience
- Pianissimo technology delivers whisper quiet scanning
- Short magnet and 71cm open bore offers an open MRI scanning environment



## Smart Investment

### Advanced 1.5T MRI productivity, safety and efficiency to boost the bottom line

With advanced 1.5T MRI productivity Vantage Fortian keeps your exams moving. Combining industry leading patient friendly features, low energy consumption, a small footprint and outstanding Canon service offerings, Vantage Fortian takes care of business.

Small footprint and low energy consumption minimizes operational costs

## Minimize space

Minimize investment in valuable floor space with a 25 m<sup>2</sup> footprint that excels in the 1.5T wide bore market.\*\*



Total Installation Space



Scan Room Space

## ECO Mode

ECO Mode reduces power consumption to minimize system operating costs. ECO Mode can be automatically activated simply by lowering the couch once the procedure is complete.



ECO Mode



Power Requirement

\*\* The 5 Gauss line is not confined within the Scan Room. Controlled access area should be taken into account by the facility when preparing for installation. The above specifications may not meet the local requirements. Please consult with your architectural and/or electric consultant for coding requirements. Some power equipment may be required to be placed in a dedicated electrical room. The minimum footprint may not be applied to some cases depending on each site.

# ***Vantage Orian***

Productivity. Comfort. Confidence.



High Productivity

Patient Comfort

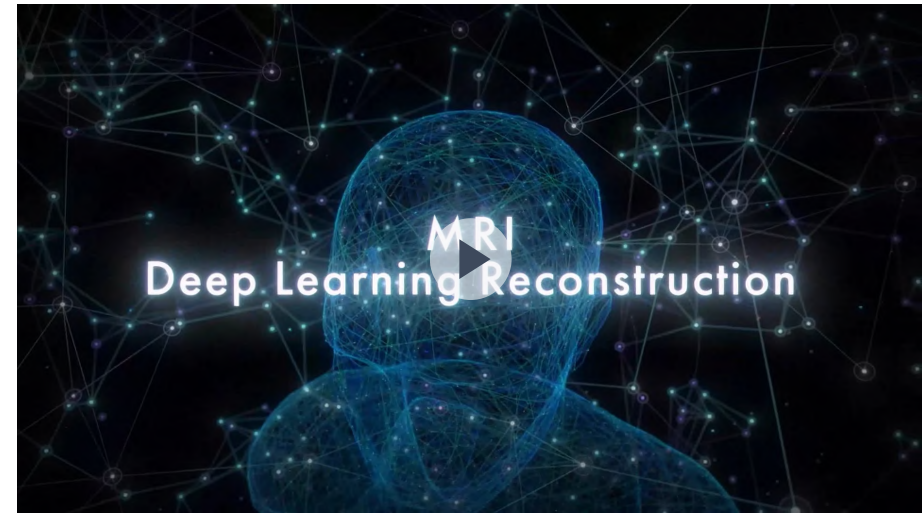
Clinical Confidence

Vantage Orian utilizes intelligent MR technology to boost productivity, patient comfort and clinical confidence at 1.5T. Focused on supporting exam efficiency and handling complex patient sets with Artificial Intelligence designed to accelerate exams and deliver clear images, Vantage Orian is the perfect balance to your 1.5T MRI business and clinical requirements.



## Intelligent

- Advanced intelligent Clear-IQ Engine (AiCE) increases SNR which helps you to see through the noise to deliver clear, sharp and distinct images
- Boost productivity by accelerating images and restoring SNR with AiCE



## High Productivity

- Compressed SPEEDER expands scan capability in both 2D and 3D scans
- Dockable Table, automated Auto Scan Assist and ForeSee View improve workflow
- Small footprint and low energy consumption minimizes operational costs



## Patient Comfort

- MR Theater helps relax patients with a virtual immersive experience
- Pianissimo technology delivers whisper quiet scanning
- Short magnet and 71 cm wide bore offers an open MRI scanning environment



## Clinical Confidence

- High resolution imaging with Saturn Technology
- Consistent and robust imaging with <sup>PURE</sup>RF
- Outstanding diffusion imaging with Gmax of 45 mT/m and SR 200 T/m/sec
- Advanced diagnosis with Olea / Vitrea





# ***Vantage Orian***

**Encore Upgrade**



## **Vantage Orian / Encore Upgrade**

Upgrading your existing Canon Medical MRI system to Vantage Orian will allow your facility to enjoy a new level of productivity, patient comfort and clinical confidence, boosted by deep learning based noise removal and scan accelerating compressed sensing technology.



Applicable to a range of Canon 1.5T models:



**EXCELART Vantage**



**EXCELART Vantage  
Powered by Atlas**



**Vantage Titan  
1<sup>st</sup> Generation**



**Vantage Titan  
2<sup>nd</sup>, 3<sup>rd</sup> Generation**

The Vantage Orian Encore program offers EXCELART Vantage, Vantage Atlas, and Vantage Titan customers with older Vantage systems exceptional value by upgrading these legacy systems to the Vantage Orian platform while keeping the magnet in place and reducing downtime and construction costs.

## Why upgrade to Vantage Orian



Keep your magnet to reduce construction cost



Reduce hospital downtime compared to replacing the entire system



Move to a new digital platform utilizing Deep Learning and Compressed Sensing technology



Get the new intelligent monitor and optional dockable table to save valuable set-up time



Keep your magnet to reduce construction cost



Keep your magnet in place  
and remove old technology.



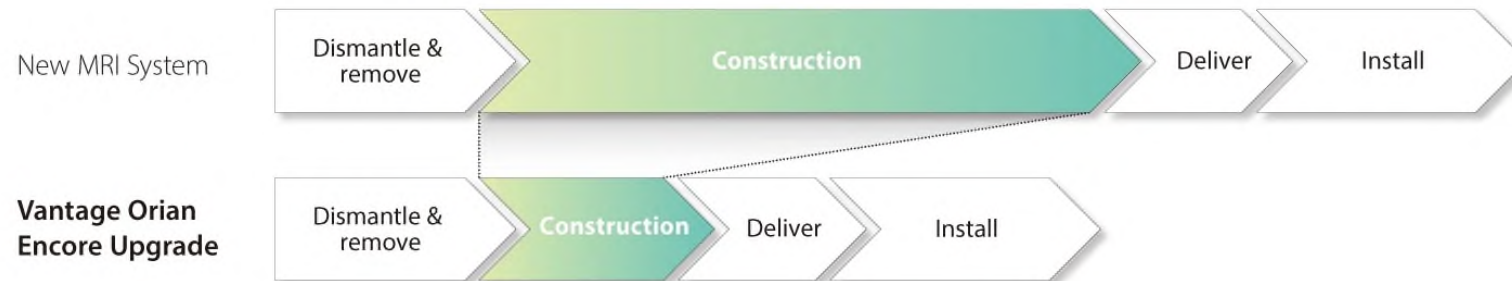
Install new Vantage Orian  
technology.



Experience Vantage Orian's enhanced  
workflow and outstanding scan  
technology.



Reduce hospital downtime compared to replacing the entire system

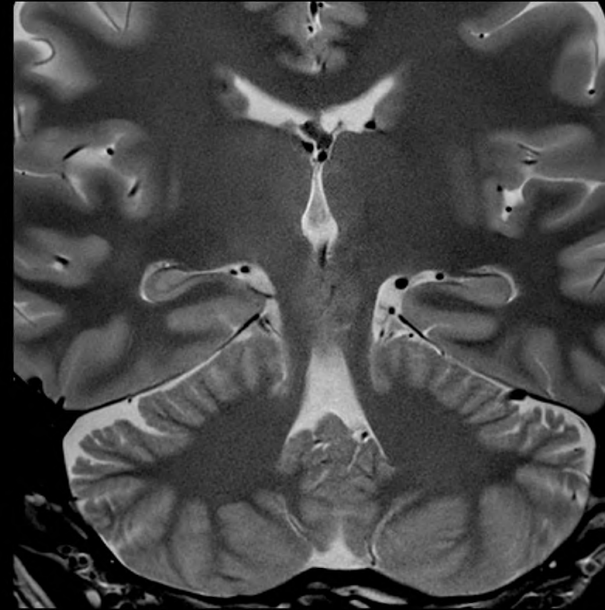
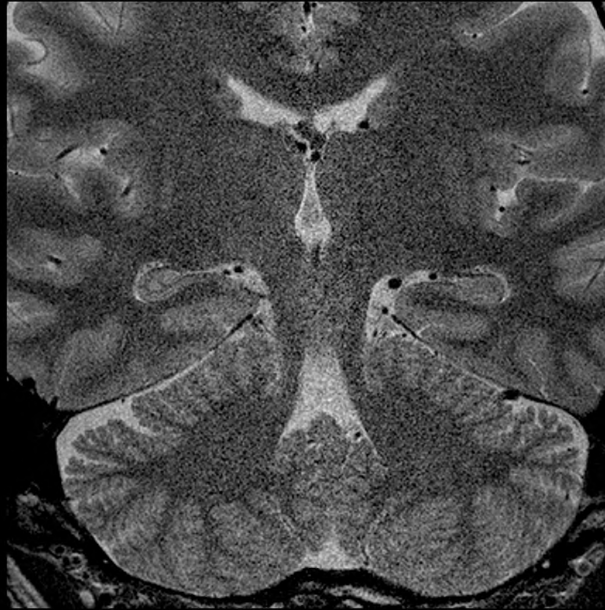


Move to a new digital platform utilizing Deep Learning and Compressed Sensing technology



**Advanced intelligent Clear-IQ Engine(AiCE)\***

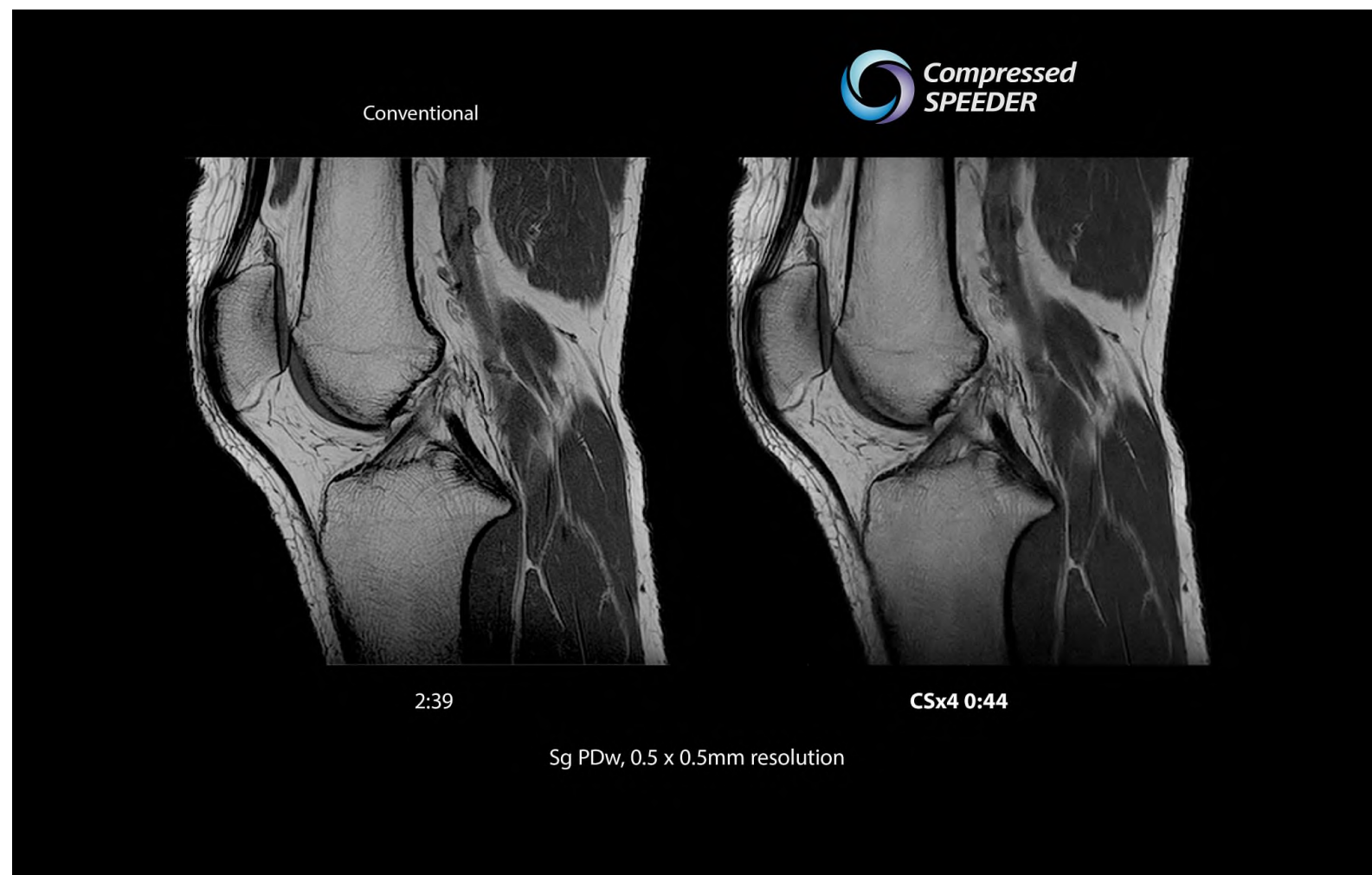
Without AiCE



T2w, 0.2x0.2mm resolution, 2mm

\* AiCE is the world's first MR Deep Learning reconstruction technology.

## Compressed SPEEDER\*\*



\*\* Compressed SPEEDER is scan accelerating compressed sensing technology.

## Intelligent

Advanced intelligent Clear-IQ Engine (AiCE) intelligently removes noise from images which results in higher SNR and enables increased resolution. Achieve sharp, clear and distinct images utilizing the power of Deep Learning, allowing you to see through the noise.

## High Productivity

Boost productivity and lower running costs with a range of rapid scan technologies, automated workflow for clinicians and energy efficient technology.

- Now with Compressed SPEEDER, rapid scan technologies reduce scan time
- Dockable Table, automated EasyTech and ForeSee View improve workflow
- Small footprint and low energy consumption minimizes operational costs

## Patient Comfort

Improve the patient experience with advanced technology for outstanding patient comfort.

- MR Theater helps relax patients with a virtual immersive experience
- Pianissimo technology delivers whisper quiet scanning
- Short magnet and 71 cm wide bore offers an open MRI scanning environment

## Clinical Confidence

Utilizing migrated technology from our high end MRI systems, Vantage Orian delivers consistent robust imaging to deliver uncompromised clinical confidence.

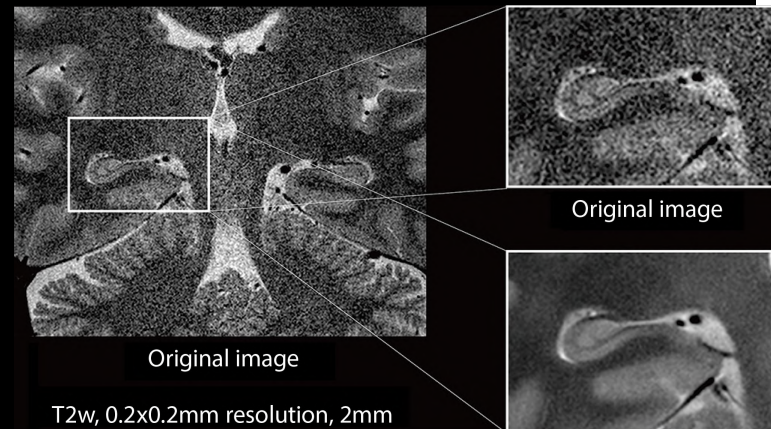
- High resolution imaging with Saturn Technology
- Consistent imaging performance with <sup>PURE</sup>RF
- Outstanding diffusion imaging with new slim gradient
- Advanced diagnosis with Olea/Vitrea

## Vantage Orian Clinical gallery

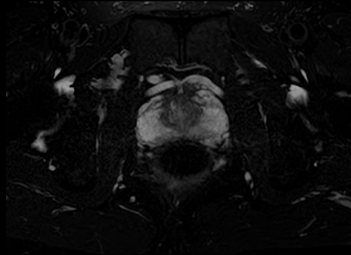
Experience examples of imaging that can be enjoyed when upgrading the Vantage Orian with our Encore program.

### AiCE

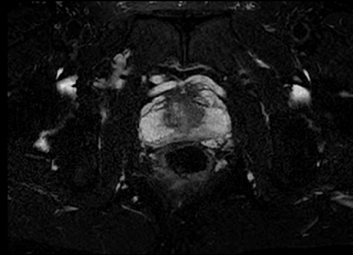
AiCE intelligently removes noise from images which results in higher SNR and enables increased resolution. Achieve sharp, clear and distinct images utilizing the power of Deep Learning, allowing you to see through the noise.



Conventional



4:27



CSx4 1:26

Ax T2w, 0.83 x 0.83mm resolution

## Compressed SPEEDER

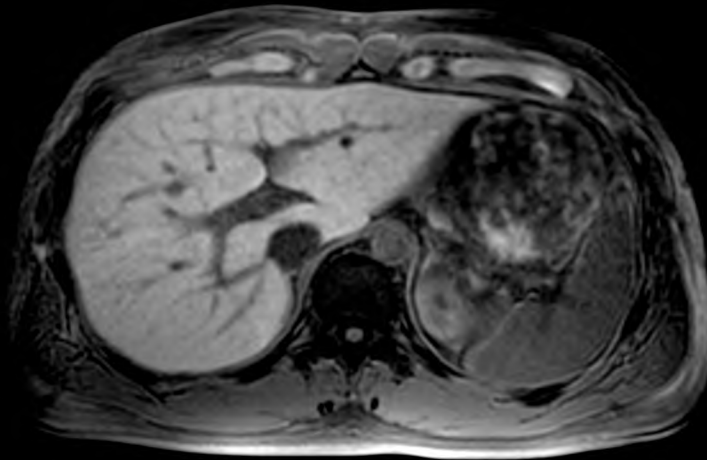
Compressed SPEEDER is a new imaging technique that can accelerate scan times across the whole body. This unique imaging approach enables high-speed imaging up to four times compared to current scan speeds while maintaining excellent image performance.

## UTE (Ultrashort TE)

Allows clinicians to capture images in tissues that generally disappear too quickly for accurate MR imaging. This enables imaging of anatomy such as the lungs, helping providers obtain information to diagnose and treat their patients.







## Quick Star free breathing

Quick Star free breathing and motion reduction can be helpful for challenging patients that have difficulty holding their breath, especially for liver examinations or uncooperative patients like pediatrics.

# ***Vantage Elan***

**NX Edition**

Fast. Efficient. Compact.



Vantage Elan / NX Edition delivers next generation MRI in a compact system with best in class power consumption

Now available with Artificial Intelligence (AI) based noise removal and compressed sensing scan acceleration technology inherited from our high-end MRI scanners, Vantage Elan delivers operational and clinical freedom on every front.



## Fast MRI

- Advanced intelligent Clear-IQ Engine (AiCE) increases SNR which helps you to see through the noise to deliver clear, sharp and distinct images in clinically relevant scan times
- Compressed SPEEDER reduces scan time while maintaining diagnostic imaging performance
- Range of rapid scan technologies including Fast 3D and Water Fat Separation reduce scan time

## Efficient MRI

### **Automated, reliable and robust**

- ForeSee View improves scan planning time and reduces the need for re-scanning
- EasyTech slice alignment produces efficient procedures by reducing workflow and improving image consistency

### **A complete clinical solution for you and your patients**

- Efficiently manage challenging patients with patient friendly applications



## Compact MRI

### **Efficient design to meet your needs**

- Optimize your hospital installation space with industry leading small footprint
- Minimize hospital downtime with rapid installation
- Optimize hospital running costs with Vantage Elan's low power consumption



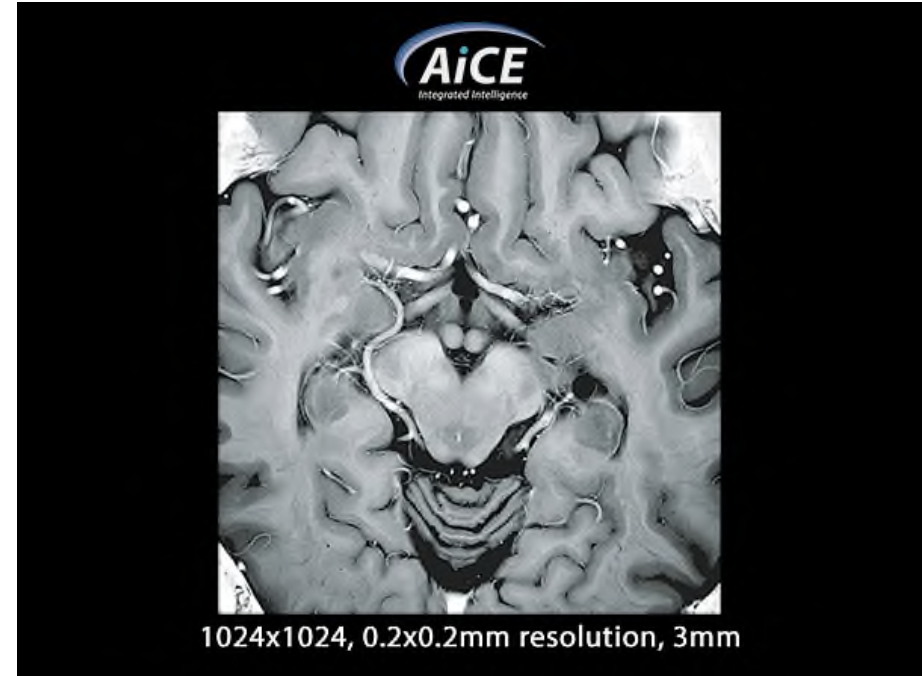
# ***Vantage Centurian***

Inspire new frontiers



## **Inspire new frontiers**

With industry highest gradient performance at 3T MRI, Vantage Centurian will inspire your research to new frontiers. Unique gradient and cooling technology delivers high anatomical detail and quantifiable imaging, and intelligent applications remove noise while increasing SNR and accelerate scan speeds. Combined with an open sequence development environment and Canon Medical's collaborative support network of clinical and scientific support, Vantage Centurian is the MRI system that brings research to the real world.

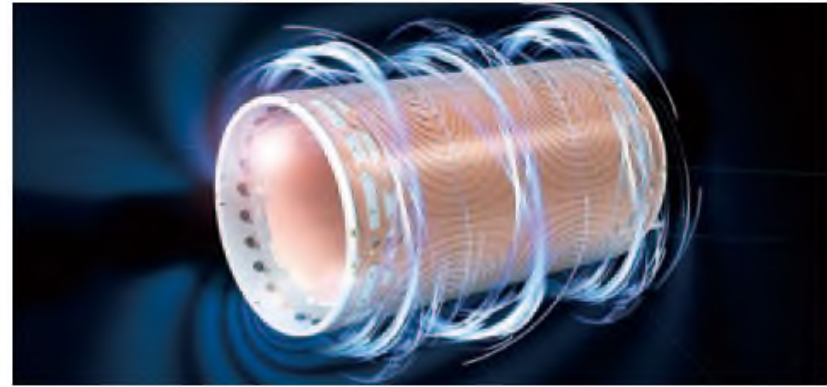


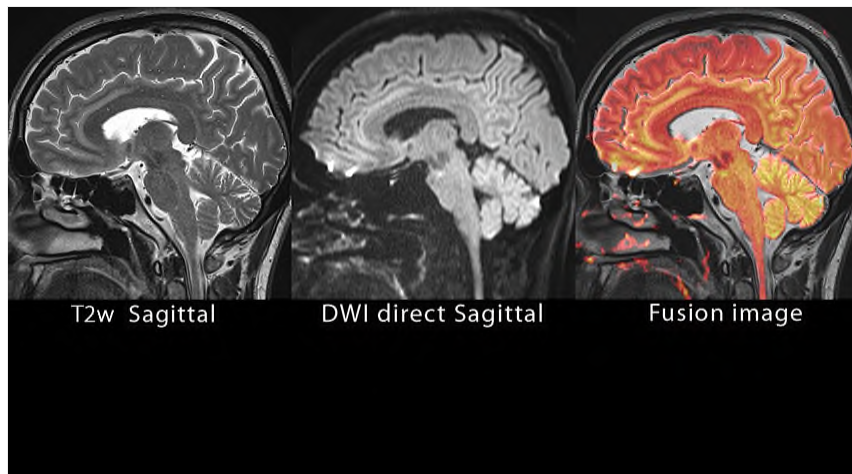


Inspiring research with high performance hardware

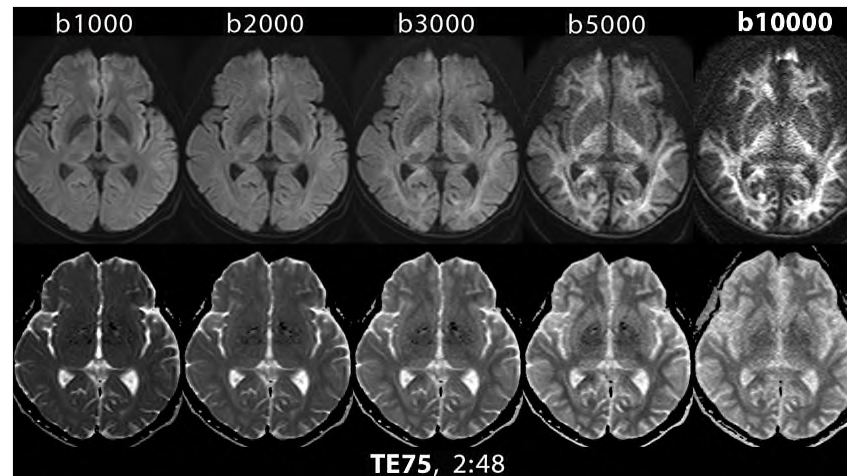
## Industry leading high gradient performance

With high gradient technology delivering industry-leading peak gradient amplitude specifications of 100 mT/m at 200 T/m/s and the ability to simultaneously reach maximum gradient strength and slew rate, Vantage Centurian provides the highest whole-body MRI performance potential in the research market. Diffusion-weighted imaging in particular benefits from the high gradient specification of 100 mT/m, delivering anatomical detail enabling researchers to more accurately characterize morphologic and functional tissue integrity at the early stages of disease. Furthermore, quantifiable image performance is achieved while maintaining high gradient strength through a new direct cooling technology that stabilizes temperature performance by significantly reducing the heat and eddy currents generated.

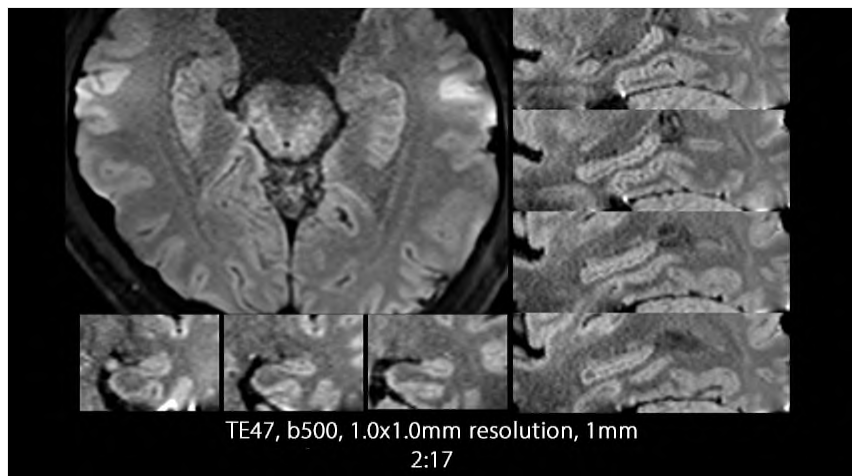




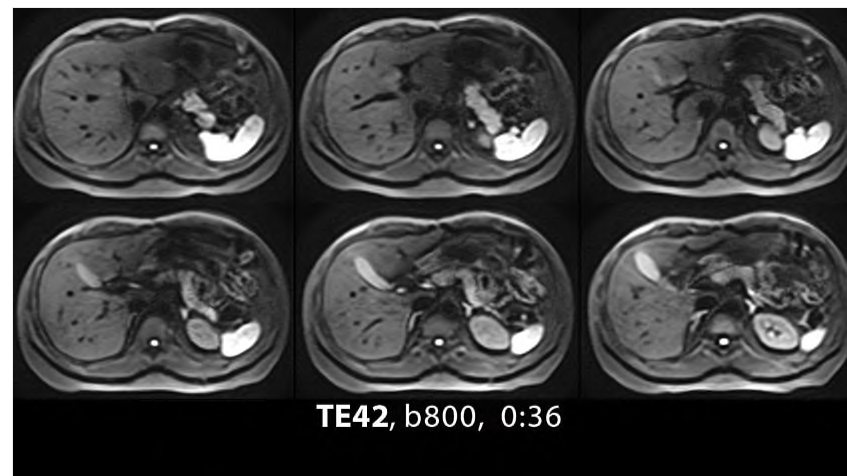
Direct Sagittal DWI



High b DWI



1mm Isotropic DWI



Short TE DWI

Explore with intelligent applications

## Advanced intelligent Clear-IQ Engine (AiCE)

Canon's Advanced intelligent Clear-IQ Engine (AiCE) utilizes a deep convolutional neural network to intelligently identify and remove noise from MR images. The reconstructed images result in higher SNR thereby enabling increased anatomical detail and spatial resolution. AiCE technology utilizes intelligent artificial intelligence algorithms to see through the noise, delivering sharp clear and distinct images. Combined with Vantage Centurian's high gradient performance, AiCE takes MRI imaging to new frontiers.





Explore with intelligent applications

## Compressed SPEEDER\* accelerates scanning while maintaining image quality performance

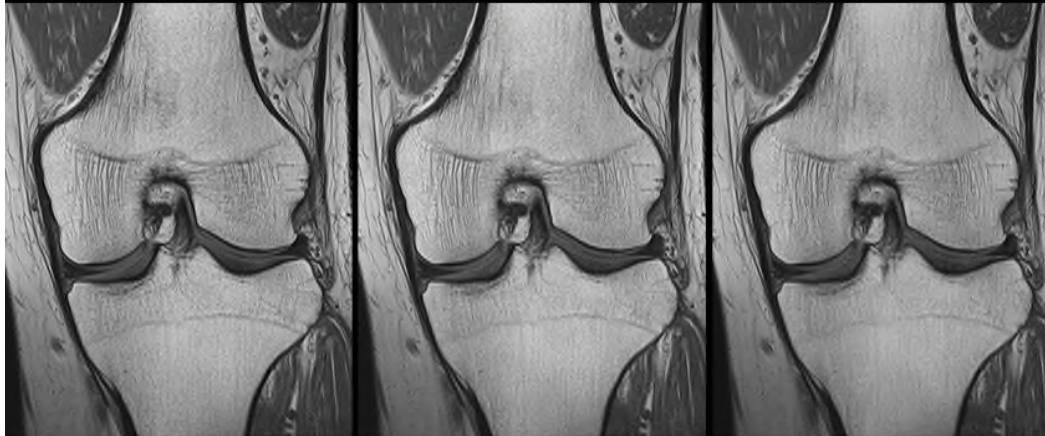
Compressed SPEEDER technology is an imaging acceleration application that combines a new parallel imaging technique utilizing a multi-sensitivity map and compressed sensing technology. This unique approach enables high-speed imaging with minimized image quality degradation during 2D imaging, a known issue of conventional compressed sensing methods. In addition, the combination of Compressed SPEEDER with AiCE makes it possible to achieve both high image quality and high scan speed at previously unachievable levels.

\* Compressed SPEEDER is covered by the following U.S. Patent number: 7,646,924.



## Knee

Original



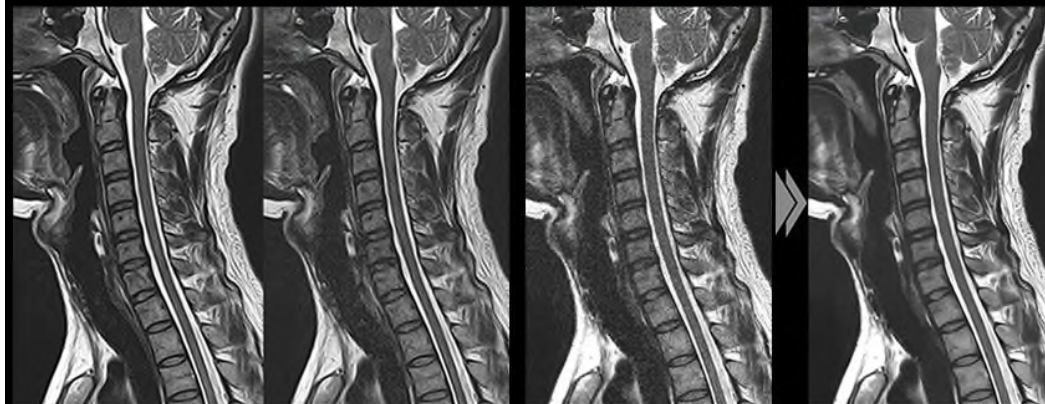
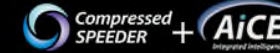
1:48

CS x2, 0:56

CS x3, 0:38

## C-Spine

Original



0.4x0.4mm

0.4x0.4mm

0.2x0.2mm

0.2x0.2mm

1:21

CS x3, 0:30

CS x3, 0:57

CS x3, 0:57



## Collaborate with a strong industry partnership

With many global collaborations already established in the MR field, Canon Medical is a strong and supportive collaboration partner. Including our subsidiary companies like Olea Medical, we can support your research with world class MR technology, ongoing clinical and scientific support at your facility or partnering with congresses and societies.

## Research and Clinical Support

Learn how our clinical scientist team collaborated with Bordeaux University in France to support the evaluation of our Advanced intelligent Clear-IQ Engine (AiCE) technology.

## Olea Software Development Kit (SDK)

A platform for imaging researchers, everything is made easier with Olea's Software Development Kit.

По вопросам продаж и поддержки обращайтесь:			
Алматы (7273)495-231	Калининград (4012)72-03-81	Омск (3812)21-46-40	Сыктывкар (8212)25-95-17
Ангарск (3955)60-70-56	Калуга (4842)92-23-67	Орел (4862)44-53-42	Тамбов (4752)50-40-97
Архангельск (8182)63-90-72	Кемерово (3842)65-04-62	Оренбург (3532)37-68-04	Тверь (4822)63-31-35
Астрахань (8512)99-46-04	Киров (8332)68-02-04	Пенза (8412)22-31-16	Тольятти (8482)63-91-07
Барнаул (3852)73-04-60	Коломна (4966)23-41-49	Петрозаводск (8142)55-98-37	Томск (3822)98-41-53
Белгород (4722)40-23-64	Кострома (4942)77-07-48	Псков (8112)59-10-37	Тула (4872)33-79-87
Благовещенск (4162)22-76-07	Краснодар (861)203-40-90	Пермь (342)205-81-47	Тюмень (3452)66-21-18
Брянск (4832)59-03-52	Красноярск (391)204-63-61	Ростов-на-Дону (863)308-18-15	Ульяновск (8422)24-23-59
Владивосток (423)249-28-31	Курск (4712)77-13-04	Рязань (4912)46-61-64	Улан-Удэ (3012)59-97-51
Владикавказ (8672)28-90-48	Курган (3522)50-90-47	Самара (846)206-03-16	Уфа (347)229-48-12
Владимир (4922)49-43-18	Липецк (4742)52-20-81	Саранск (8342)22-96-24	Хабаровск (4212)92-98-04
Волгоград (844)278-03-48	Магнитогорск (3519)55-03-13	Санкт-Петербург (812)309-46-40	Чебоксары (8352)28-53-07
Вологда (8172)26-41-59	Москва (495)268-04-70	Саратов (845)249-38-78	Челябинск (351)202-03-61
Воронеж (473)204-51-73	Мурманск (8152)59-64-93	Севастополь (8692)22-31-93	Череповец (8202)49-02-64
Екатеринбург (343)384-55-89	Набережные Челны (8552)20-53-41	Симферополь (3652)67-13-56	Чита (3022)38-34-83
Иваново (4932)77-34-06	Нижний Новгород (831)429-08-12	Смоленск (4812)29-41-54	Якутск (4112)23-90-97
Ижевск (3412)26-03-58	Новокузнецк (3843)20-46-81	Сочи (862)225-72-31	Ярославль (4852)69-52-93
Иркутск (395)279-98-46	Ноябрьск (3496)41-32-12	Ставрополь (8652)20-65-13	
Казань (843)206-01-48	Новосибирск (383)227-86-73	Сургут (3462)77-98-35	
Россия +7(495)268-04-70	Киргизия +996(312)-96-26-47	Казахстан +7(7172)727-132	